



Beacon Tower Fishponds Road, Fishponds, Bristol, Offers In The Region Of £150,000

Situated in the heart of Fishponds, close to all amenities including shops, bus routes and cycle track, is this 6th floor converted apartment with far reaching views and a light and airy feel. Accessed via communal hallway with lift access, the accommodation briefly comprises hallway, open plan lounge and kitchen, good sized double bedroom and shower room. The property is double glazed and has electric heating. Outside is a handy communal area. Energy Rating D, Council Tax Band A.

- No Onward Chain
- Great Location
- Close to Amenities
- Double Bedroom
- Open Plan Living
- Shower Room
- Double Glazing
- Electric Heating
- Lift to Floor Access
- Off Street Parking

Viewing

Please contact our Brunt & Fussell Ltd Office on 01179566004 if you wish to arrange a viewing appointment for this property or require further information.



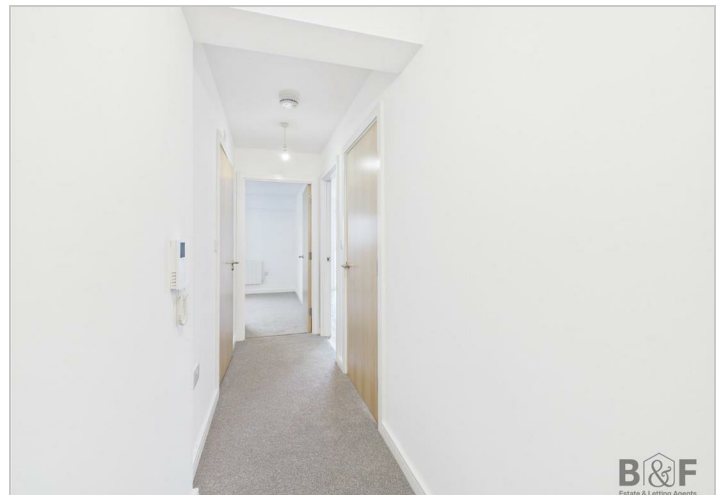
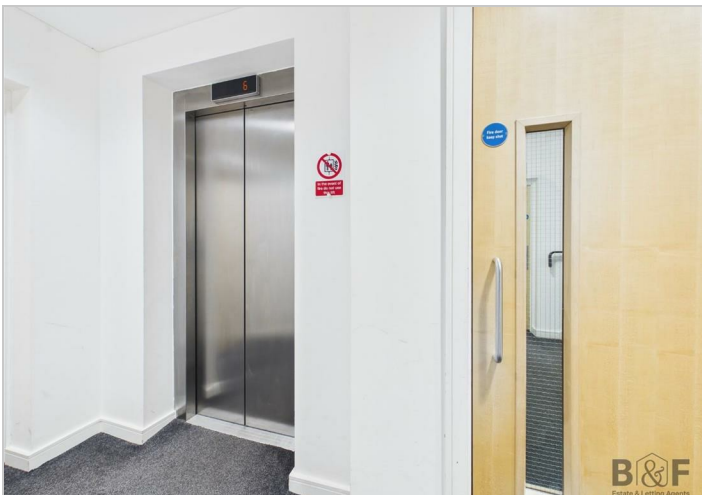
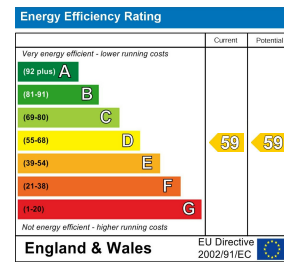
Floor Plan



Area Map



Energy Efficiency Graph



These particulars, whilst believed to be accurate are set out as a general outline only for guidance and do not constitute any part of an offer or contract. Intending purchasers should not rely on them as statements of representation of fact, but must satisfy themselves by inspection or otherwise as to their accuracy. No person in this firm's employment has the authority to make or give any representation or warranty in respect of the property.